

Realtek PCIe GBE Family Controller Series v2.67 (10/16/19)
PXE-E61: Media test failure, check cable

PXE-M0F: Exiting PXE ROM.

Intel UNDI, PXE-2.1 (build 083)
Copyright (C) 1997-2000 Intel Corporation

This Product is covered by one or more of the following pa
US6,570,884, US6,115,776 and US6,327,625

Realtek PCIe GBE Family Controller Series v2.67 (10/16/19)
PXE-E61: Media test failure, check cable

PXE-M0F: Exiting PXE ROM.



Boot Device Error Fix

PXE-E61: Media test failure, check cable

PXE-M0F: Exiting PXE ROM.

Intel UNDI, PXE-2.1 (build 083)
Copyright (C) 1997-2000 Intel Corporation

This Product is covered by one or more of the following pa
US6,570,884, US6,115,776 and US6,327,625

Realtek PCIe GBE Family Controller Series v2.67 (10/16/19)
PXE-E61: Media test failure, check cable

PXE-M0F: Exiting PXE ROM.

Revision 1
Nov. 15, 2023

Reboot and Select proper Boot device
on Insert Boot Media in selected Boot device and press a



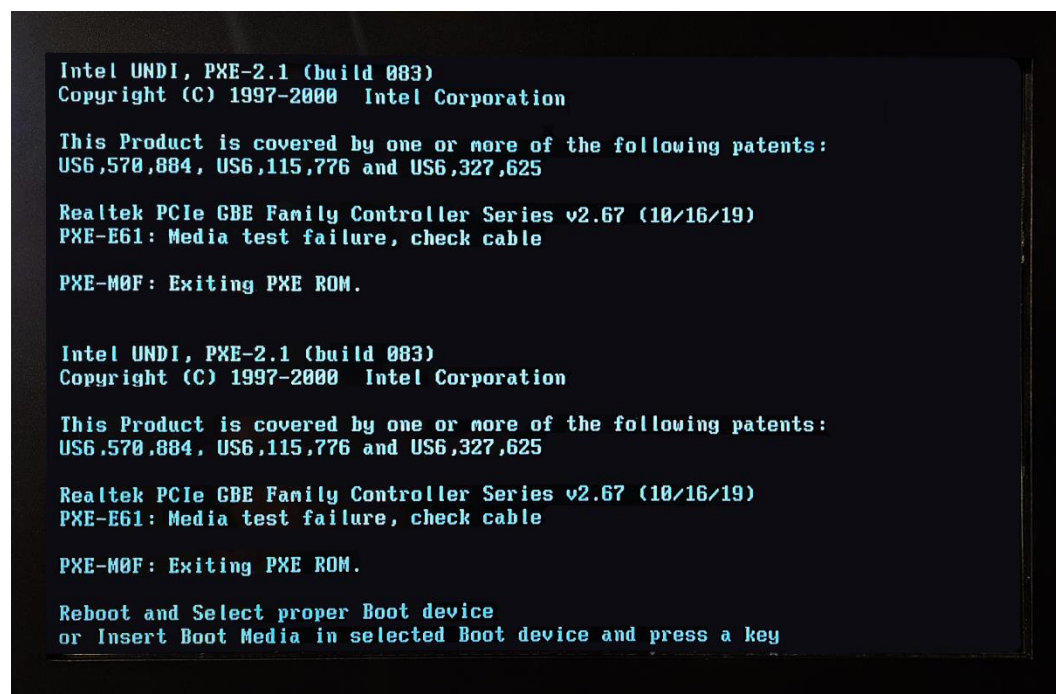
DISCLAIMER

The information contained in this instruction manual is for information purposes only. Primero Games, LLC ("Primero") is not responsible for any errors or omissions, or for the results obtained, from the use of this information. All information in this instruction manual is presented "as is" with no guaranty of completeness, accuracy, or for the results obtained from its use. This instruction manual is not intended to be a safety guide. You must take all safety precautions that you believe are necessary. Your use of this information is at your own risk. This instruction manual is not a product warranty. PRIMERO MAKES NO EXPRESS OR IMPLIED WARRANTY AND DISCLAIMS ALL OTHER WARRANTIES WITH RESPECT TO THE INFORMATION CONTAINED HEREIN.

Introduction

In some cases, when a machine is first booted up, it will have incorrect settings in the BIOS for the order in which the devices boot up. This causes an error as the machine can't find the operating system to boot.

If this occurs, the following screen will appear:



Warning: Do Not Press a Key to start.

Reboot and Select proper Boot device
or Insert Boot Media in selected Boot device and press a key



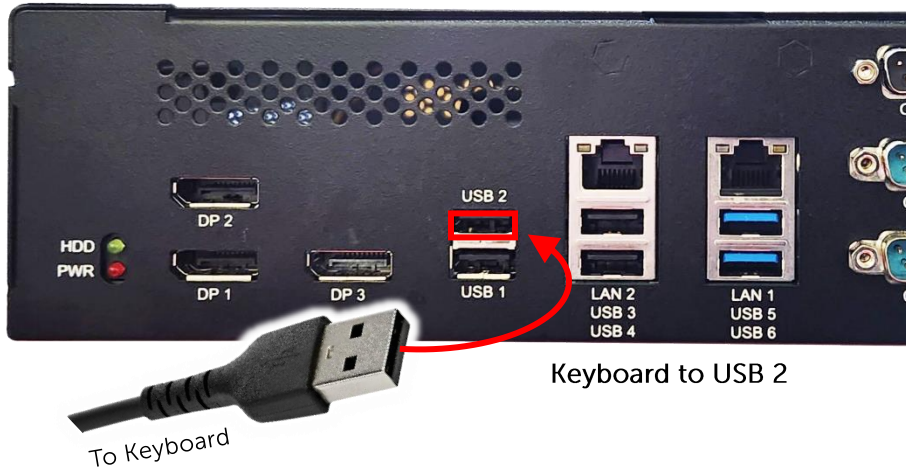
Boot Device Error Fix



Fixing the Boot Order

To correct this error, the operator must fix the boot order in the BIOS.

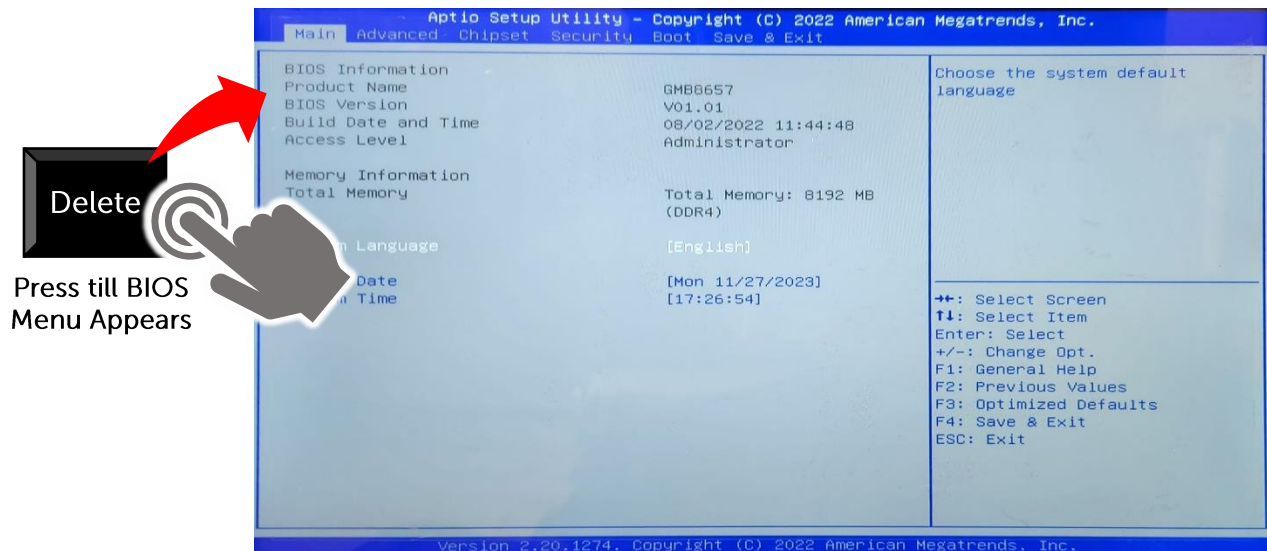
1. Connect a Keyboard to USB 2 on the Board.



2. Reboot the Machine.



3. Once the Machine starts to Boot, **Begin Pressing** the Delete button on the Keyboard repeatedly until the BIOS Main Menu (Aptio Setup Utility) appears.

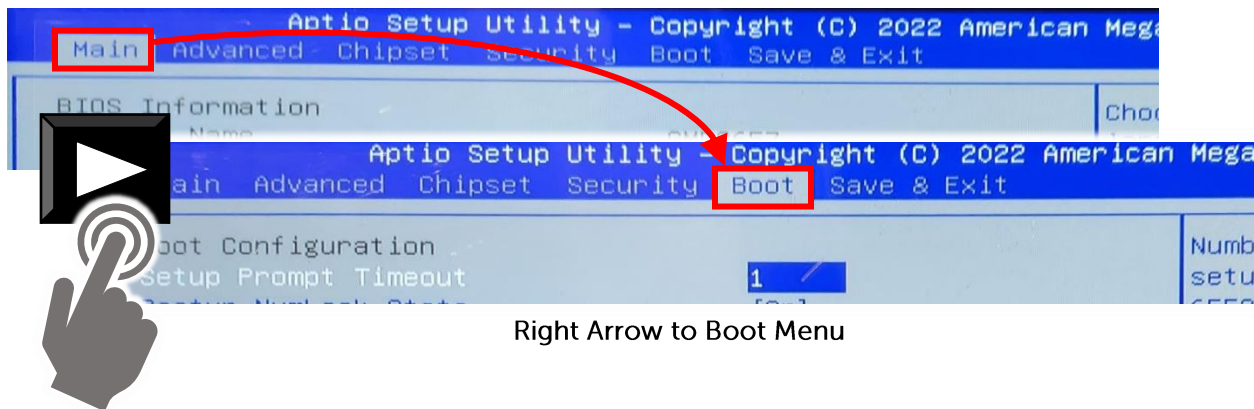


BIOS Menu

Boot Device Error Fix

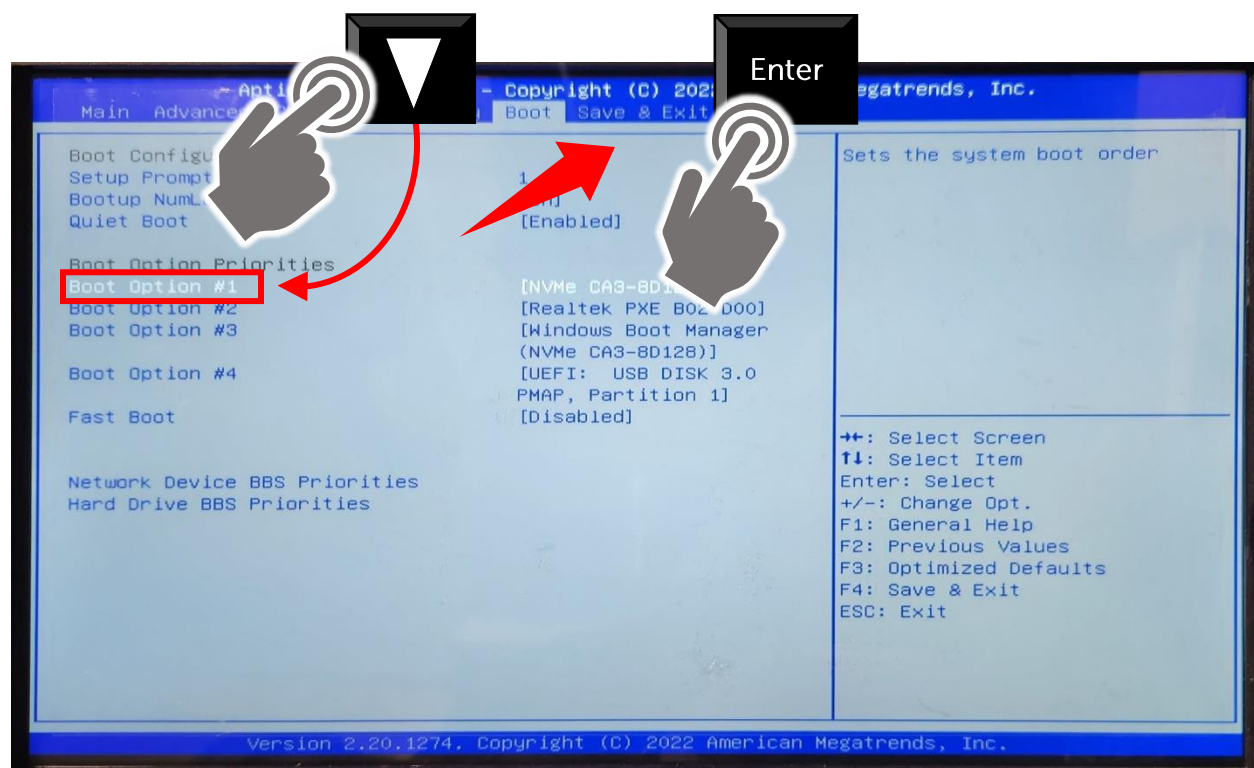


4. Use the Right Arrow key to Scroll to the Boot Menu.



Right Arrow to Boot Menu

5. In the Boot Menu, use the Down Arrow to Highlight (in White) "Boot Option #1" and Press Enter to Select.

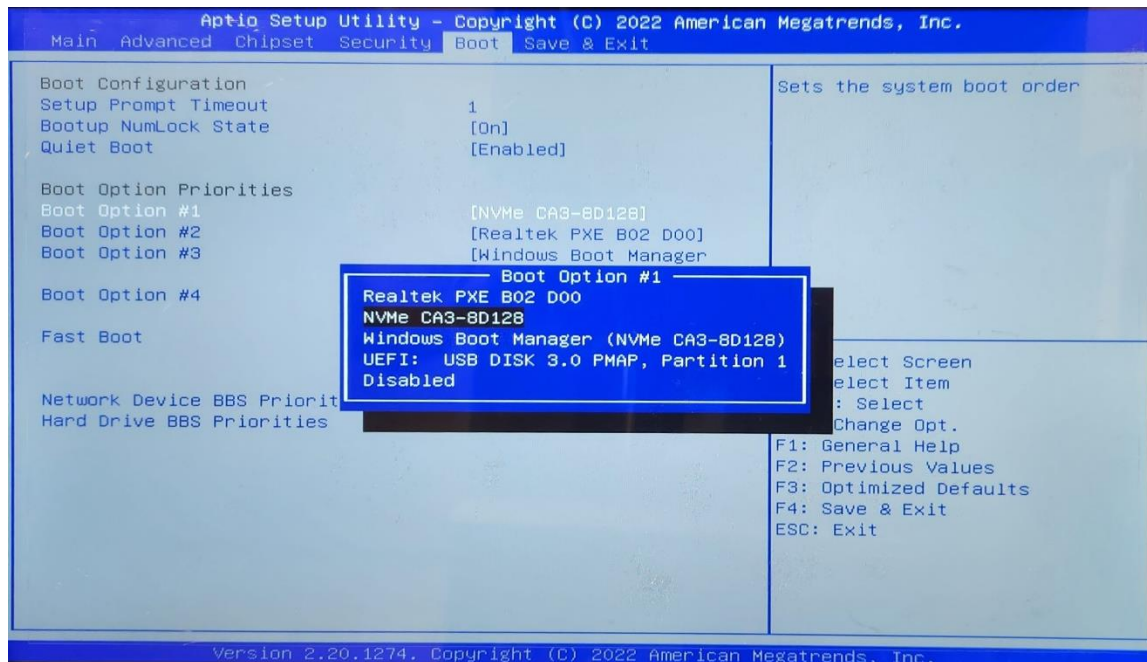


Down Arrow to "Boot Option #1" and Press Enter

Boot Device Error Fix

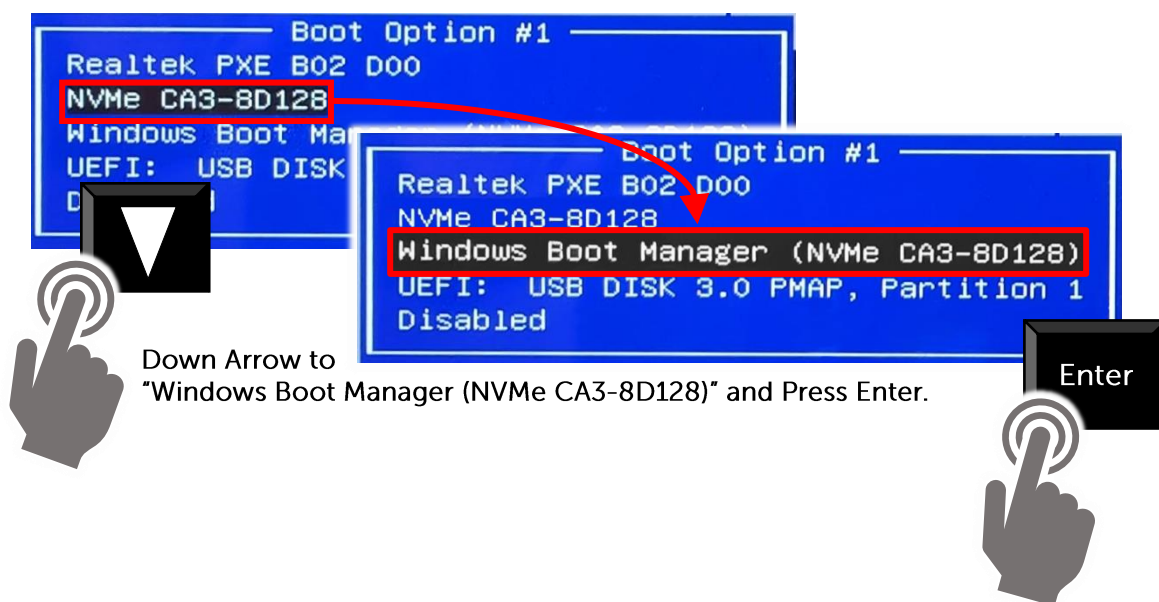


The Boot Option #1 Menu will appear.



Note: The Default Selection is the "NVMe CA3-8D128" and this is incorrect.

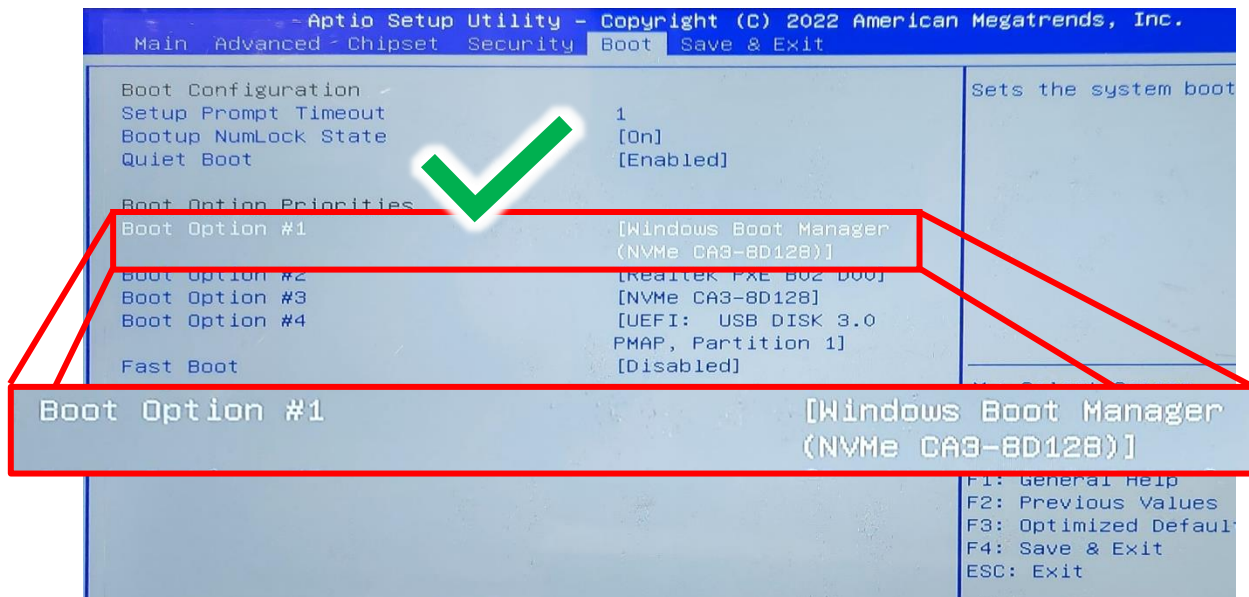
6. Use the Down arrow to Select "Windows Boot Manager (NVMe CA3-8D128)" and Press Enter.



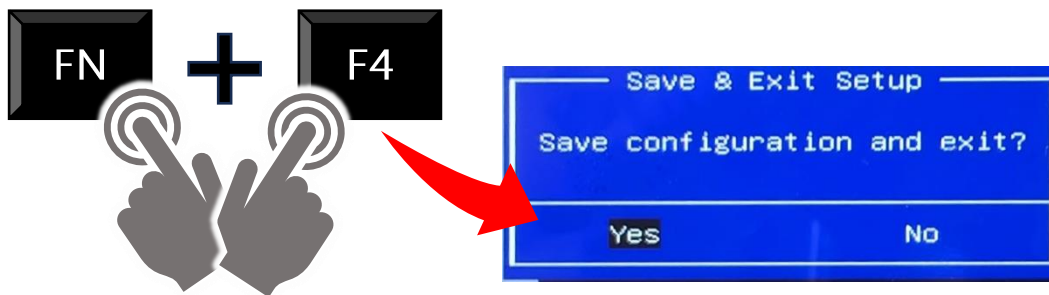
Boot Device Error Fix



Boot Option #1 now shows "Windows Boot Manager (NVMe CA3-8D128)" is Selected.



7. Press the Function Key and F4 at the same time to open the Save and Exit dialog.



FN + F4 to Save.

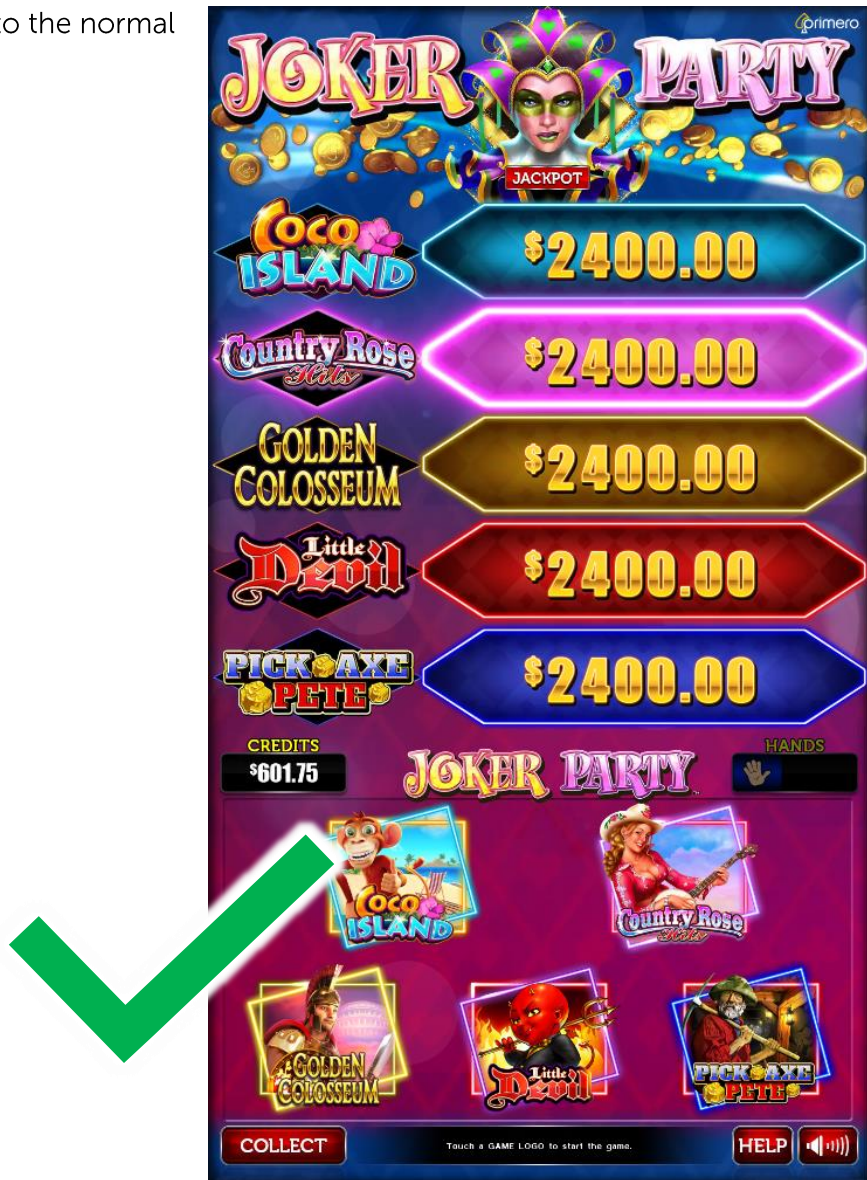
8. Press Enter to Save the setup and Exit.



Boot Device Error Fix



The System should Reboot to the normal Game or Setup Mode.



For Issues, Questions or Concerns, please call our Support (Fill) line at 404-971-8360