



## **Third Party Cabinet Settings**

---

### **For Primero Games**

# Third Party Cabinet Settings



## Disclaimer

The information contained in this instruction manual is for information purposes only. Primero Games, LLC ("Primero") is not responsible for any errors or omissions, or for the results obtained, from the use of this information. All information in this instruction manual is presented "as is" with no guaranty of completeness, accuracy, or for the results obtained from its use. This instruction manual is not intended to be a safety guide. You must take all safety precautions that you believe are necessary. Your use of this information is at your own risk. This instruction manual is not a product warranty. PRIMERO MAKES NO EXPRESS OR IMPLIED WARRANTY AND DISCLAIMS ALL OTHER WARRANTIES WITH RESPECT TO THE INFORMATION CONTAINED HEREIN.

## Symbols Used in This Guide



Indicates a **Note** or tip that the Operator should be aware of or may be helpful during the set up.



Indicates a **Warning** in which the Operator should pay close attention as an error may occur, damage to the machine, software or injury to the Operator may also occur.

Version	Author / Contributors	Date	Changes / Comments
1.0	Shawn Lucci – Technical Writer Darren Breese – Director of Business Development Chris Ward – Technical Services Supervisor	1.16.26	Original Document

## Third Party Cabinet Settings



### Connect to the Internet to Activate Windows.

 **WARNING:** Do Not Boot Up the Cabinet Until the Internet is Connected.



1. Connect the Internet to the PC inside the Cabinet via Ethernet Cable.



2. Power on the Cabinet.



3. Windows will Activate in the Background as the system Boots Up.

If necessary, the game may update.



# Third Party Cabinet Settings



## Check Time and Date Settings

1. Key the Cabinet to Access the Menu system.

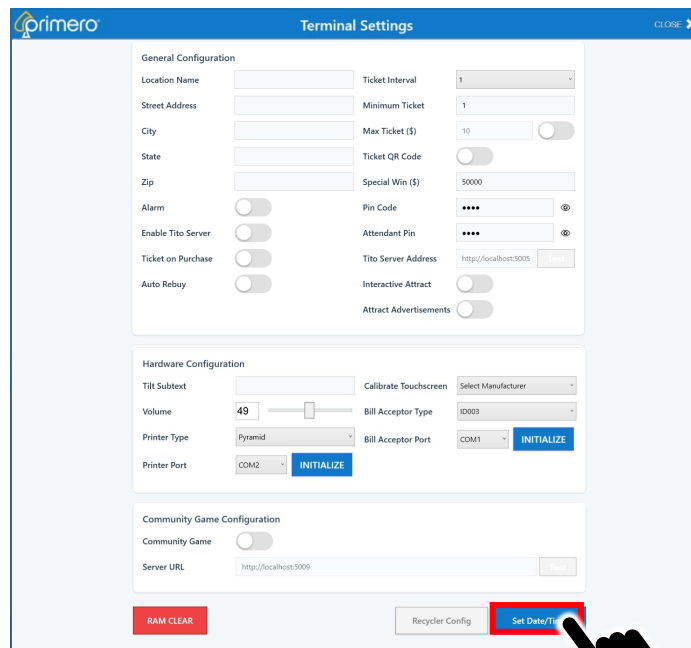


2. On the Main Menu Tap Terminal Settings.



Terminal Settings

3. Tap Set Date/Time.



Set Date/Time

## Third Party Cabinet Settings



If the Date and Time are correct, Exit the Menu System.

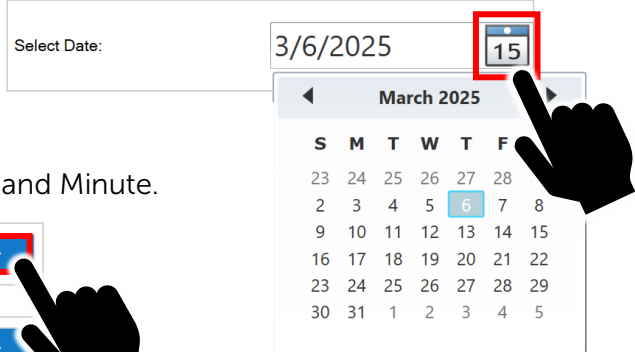
Current System Date/Time:

06-Mar-2025 10:54 AM

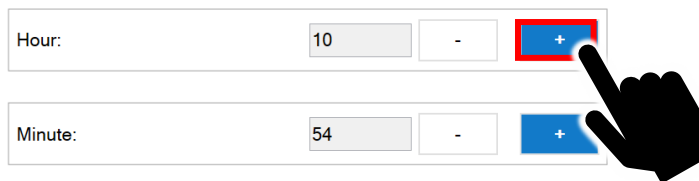


If the Time and Date are incorrect, Set the Date and Time manually.

1. Tap the Calendar button to select a date.



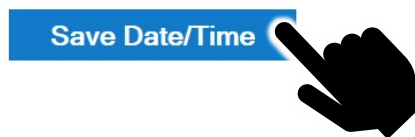
2. Tap  or  to change the Hour and Minute.



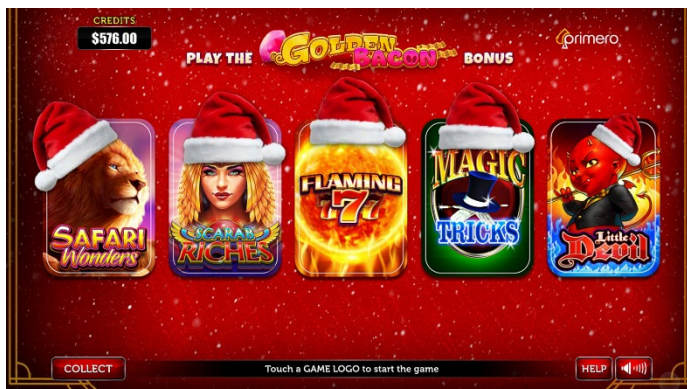
3. Tap the Radio Button to select AM or PM.



4. Tap Save Date/Time to set the time.



5. Exit to the Game.

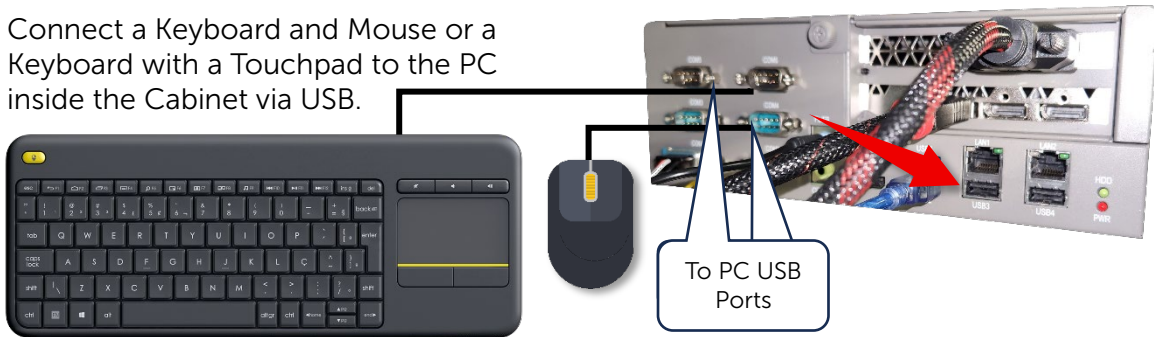


# Third Party Cabinet Settings



## Check the Display Settings

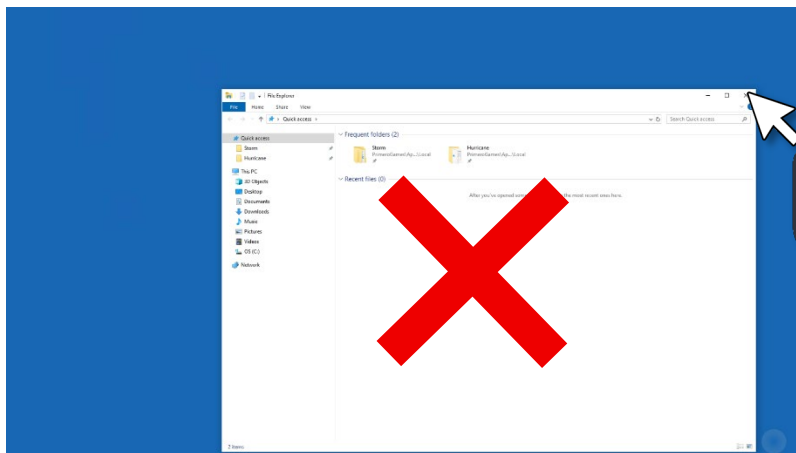
1. Connect a Keyboard and Mouse or a Keyboard with a Touchpad to the PC inside the Cabinet via USB.



2. Press Ctrl and Y to access Windows.



3. Close any open windows.



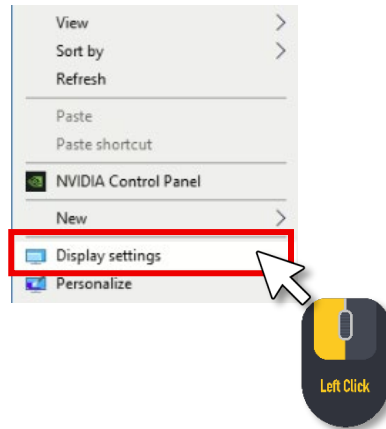
4. Right Click on the Screen.



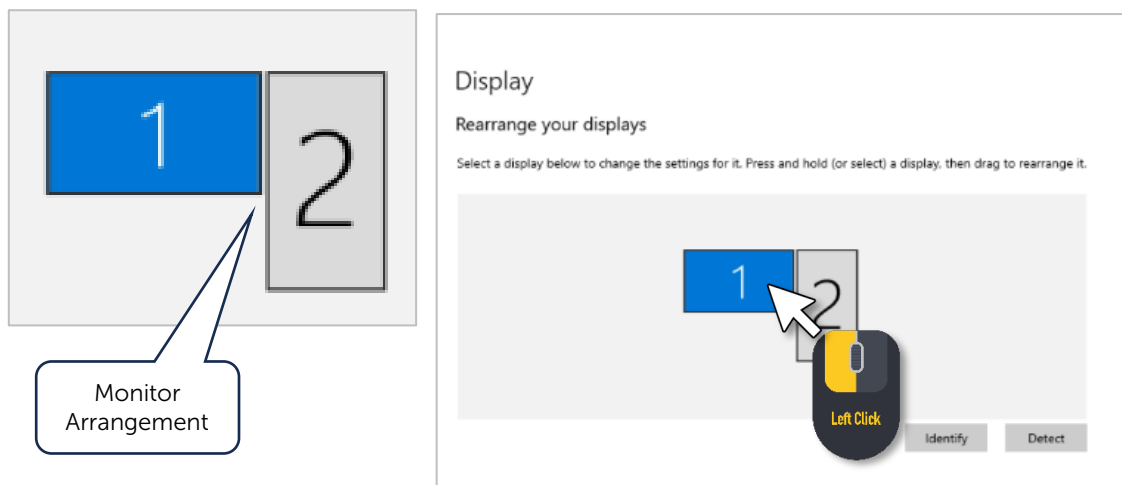
## Third Party Cabinet Settings



5. Select Display Settings.

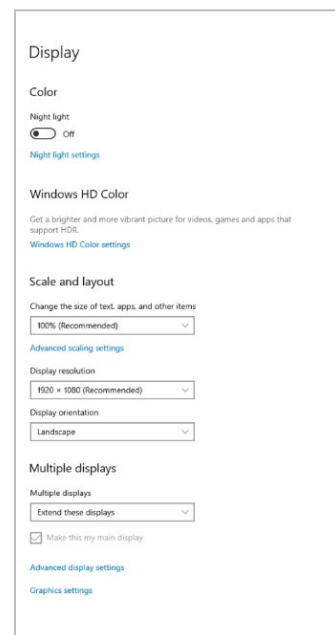


6. Make sure the monitors are arranged as shown and Select Monitor 1.



7. Scroll Down and make sure the settings for Monitor 1 are:

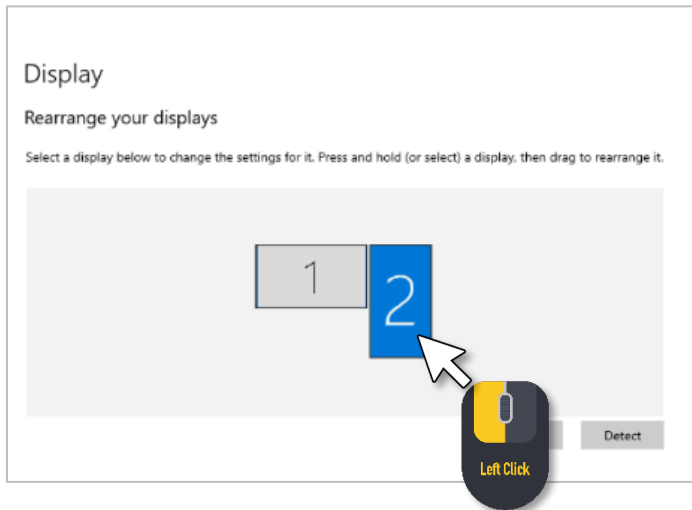
- Night Light = Off
- Scale = 100%
- Display Resolution = 1920 x 1080
- Display Orientation = Landscape
- Multiple Displays = Extend these displays
- Make this my main display = Checked



## Third Party Cabinet Settings

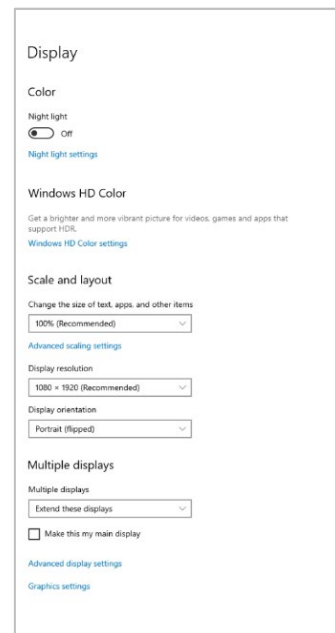


8. Scroll back up and Select Monitor 2.

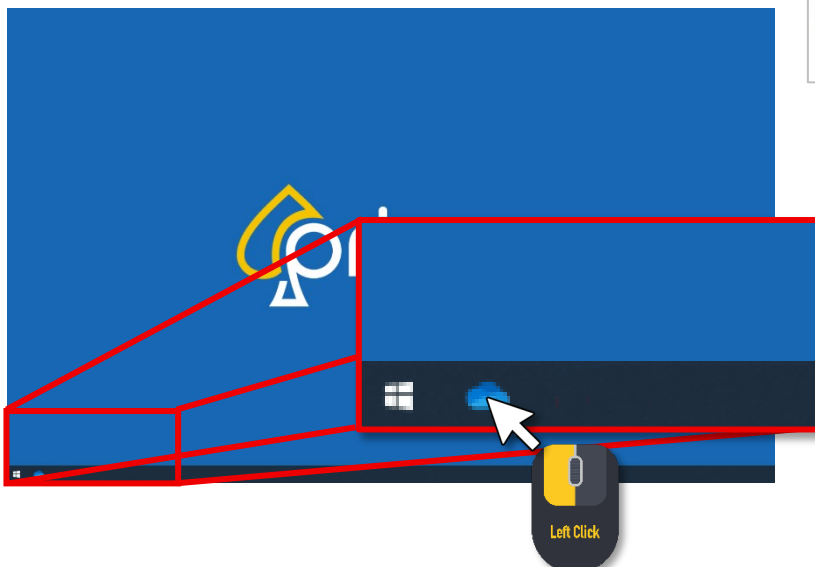


9. Scroll Down and make sure the settings for Monitor 2 are:

- Night Light = Off
- Scale = 100%
- Display Resolution = 1920 x 1080
- Display Orientation = Portrait (flipped)
- Multiple Displays = Extend these displays
- Make this my main display = Unchecked



10. Run the Game from the Taskbar.



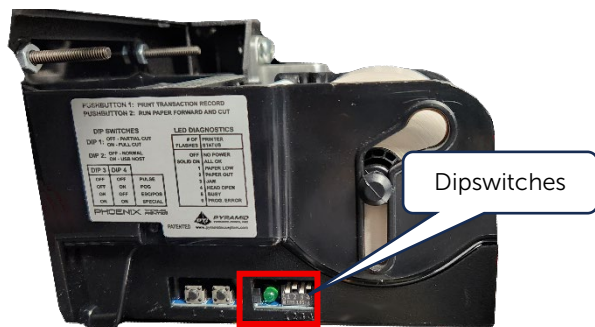




## Third Party Cabinet Settings

### Check the Printer Dipswitches

Make sure the Printer Dipswitches are set correctly.



1 2 3 4  
On Off On Off

